

A guide for families visiting London Transport Museum

Before you visit

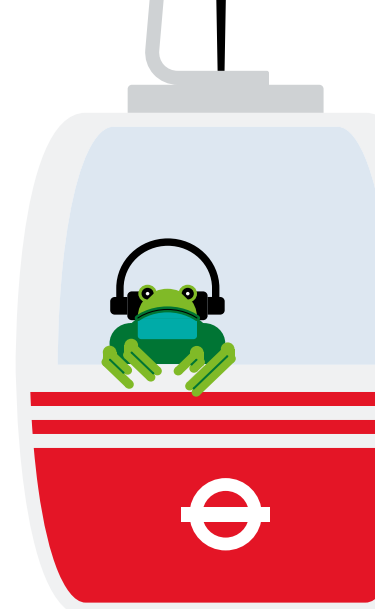
Avoid the possibility of queues and buy your tickets in advance. Visit ltmuseum.co.uk and find the fast track ticket option on our homepage.

Don't forget **children and young people aged 17 and under go free!** Anyone under 12 must be accompanied by an adult.

Adult tickets give you unlimited access to the Museum's galleries and temporary exhibitions **for a whole year.**

New for families

All Aboard is our new family play zone for children aged 0-7. Children can enjoy an interactive fleet of mini vehicles, drive a real bus, and dress up in uniforms to become a mechanic, riverboat captain, station announcer or driver. All Aboard is located on the ground floor and level 1 of the Museum. Look out for the Baby DLR the Museum's first dedicated area for babies.



Exploring the Museum

Free floor plans are available on arrival and will help you navigate around the Museum.

Our free **stamper trail** will help you follow the story told in the Museum displays. To begin your journey, take the lift back in time to level 2.

The **family station** offers **creative paper-based activities** for you to do as you explore. It is normally located in front of the Transportorium, beside the black taxi on the ground floor.

Highlights

Make sure you don't miss out on some of our favourite experiences in the Museum:

- ♦ Sit inside the omnibus and follow the 'Omnibus law' and look out for the horse poo! (level 2)
- ♦ Listen to the 'navvies' digging the first Underground train tunnel (level 1)
- ♦ Climb the steep spiral stairs of the tram and guess at the argument going on inside (ground floor)
- ♦ Explore our collection of wonderful poster art. Can you spot the tiger, where is he from? (ground floor)



A guide for families visiting London Transport Museum

Activities

During the school holidays we run special events and activities. Visit our website for dates and times.

Creative activities take place in the Transportorium on the ground floor and have a different theme each holiday.

Look out for our **costumed actors** in the galleries who can tell you all about their experiences of working and travelling on London's transport.

Tickets please! Handle objects from the Museum's bus and uniform collections.

Keep in touch

Be the first to find out what's on for families. Sign up to receive London Transport Museum's newsletter; ltmuseum.co.uk/contact-us/newsletter

 [facebook.com/ltmuseum](https://www.facebook.com/ltmuseum)

 [@ltmuseum](https://twitter.com/ltmuseum)

ltmuseum.co.uk

Facilities

Free cloakroom

Baby changing facilities available in both male and female toilets.

Breastfeeding is welcomed. If you would like some privacy you can use our **baby feeding room** on the ground floor.

The Museum is fully accessible with a buggy. Or you can leave your buggy in our **buggy park**.

Free floor plans of the Museum are available online, or on arrival.

Picnics are welcome during school holidays and at weekends and can be eaten in our Lower Deck cafe bar on the ground floor.

The Upper Deck cafe bar can be found above the shop. It offers a family-friendly menu including Tube line milkshakes and transport-themed food.

