

Mission one: Robot Travel Companion

London Transport Museum is on a mission to find **Dreamers** to be engineers of the future.

Your mission, should you choose to accept it, is to design and build a Robot Travel Companion that makes journeys easier, faster and more fun!

Mission duration between 45min – 1.5hrs



Mission tasks

- Draw your design. Make sure you've answered all the questions in the 'Things to think about' section.
- Build your robot prototype from recycled materials you have in your house.
- To enter our prize draw, get a grown-up to share your creation with London Transport Museum on Twitter or via email.

For more information, visit our website at ltmuseum.co.uk/future-engineers



Mission kit - you will need:

Recycled materials e.g. cereal boxes, scissors, pens, paper, tape or glue



Things to think about:

- What will your Robot Travel Companion look like?
- How big is it?
- How will it assist the public? Will it help people who are lost? Does it show you which routes are busy?
- How will it speak to you or show information?
- Will it speak different languages?
- How will it help the needs of lots of different people?



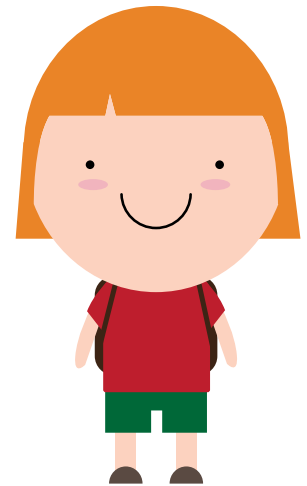
Over 7 years old? Try our extended mission:

- Create a publicity poster to pitch your idea to the real-life engineers at Cubic* explaining why your design is the best and what's special about it.



Need some inspiration?

See how we had a go ltmuseum.co.uk/future-engineers



Dreamer

*Who are Cubic?

Cubic Transport Systems designed the Oyster card, making travelling in London quicker and easier for passengers. They are always exploring new, innovative ideas for the future. Cubic recently created a palm scanner for an exhibition at the London Transport Museum that turns your palm into your ticket.