



Enquiry-based learning activity – Museum session or Outreach session

Day: Monday and Friday (in Museum) or any day (as Outreach)

Session length: 50–60 minutes

Party size: 30

This fun, interactive session can be delivered as Outreach in lessons, as part of enrichment days, or as part of your Museum visit. Students build on their prior knowledge and ideas to make judgements about the significance and impact of public transport on the City of London and its people.

1. What will the students do?

Step 1

Work in small groups to investigate key vehicles in London Transport Museum's collection.

Step 2

Work as teams to identify and investigate other sources from our collection to build understanding of the impact and significance of public transport on London.

Step 3

Share their knowledge with the rest of the class through a quiz, using interactive electronic voting equipment.

Step 4

Vote to choose the mode of transport most significant to London.

2. What are the two main learning outcomes?

- ◆ Students develop knowledge and understanding of their city through a focus on a familiar and accessible topic.
- ◆ Students work as part of a team and make judgements about significance.

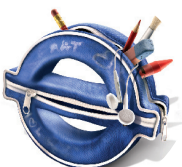
3. What are the main curriculum links?

Geography: 1.1a; 1.2a; 1.4a; 1.5a; 2.1d, g; 2.3a; 3a, b, h, g; 4c, d, j

History: 1.3a; 1.4a; 1.5a; 2.1a, b; 2.2a, d; 3g, h; 4b, c, e

4. Why use LTM learning to achieve this?

Our high-quality resources and electronic voting equipment engage students in learning. A focus on their city helps them address complex issues such as significance, patterns and processes, place and identity.



Pre-session and follow up activities:

- ♦ To prepare for their session, students can build their prior knowledge by exploring the Museum website www.ltmuseum.co.uk. However this session is designed to build on students' existing knowledge and ideas, so preparation is not essential.
- ♦ This session is an ideal way to prepare students for a visit to the Museum. In the Museum, they can use our gallery investigation sheets at <http://www.ltmuseum.co.uk/learning/169.aspx> to develop their skills of learning from objects.
- ♦ The judgements which emerge from the session form a useful basis for further discussion or a presentation of students' ideas.

The learning team at London Transport Museum thank the following schools for their help and advice in the development of this session:

Haling Manor High School, Croydon

Pimlico School, Westminster

Hampstead School, Camden

Acton High School, Ealing

